

INVACARE®

# SOLACE® PREVENTION

THERAPEUTIC SUPPORT SURFACES

---



---

The **Invacare® Solace® Prevention Series Mattresses** are unique single and dual-layered foam mattress replacements that are designed to help minimize the risk of pressure ulcers by distributing the weight as uniformly as possible and allowing blood to flow through the capillaries in areas prone to lesion development. The Prevention Series offers four mattresses, each increasing in treatment efficacy as you move up the line. The unique and patented designs combine comfort and technology for patient and caregiver confidence.

---

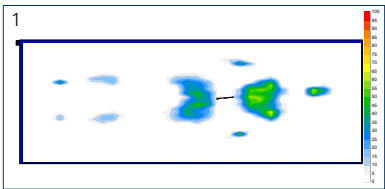
**Invacare® Solace® Prevention 0080 Mattress**

The Solace SPS0080 mattress is an economical foam mattress which features a single layer of foam specially fabricated to provide three zones of pressure redistribution. It is designed to reduce patient interface pressure across the surface.

**Features**

- 70 Denier nylon top cover
- 11 oz. tri-laminate vinyl bottom
- Fluid resistant cover
- Fortress cut convoluted foam
- Compliant with federal fire regulations

**HCPCS Code: E0184**



1. Test shows subject in supine position demonstrating contact measurement between key pressure points using FSA pressure mapping technology. Subject: Female, 5'2", 105 lb.

				
Model #	Dimensions	Weight Capacity	Regulation Compliance	Limited Warranty
SPS0080	80" L 36" W 6" H	350 lb.	16 CFR 1632 16 CFR 1633	2 Years (Mattress) 1 Year (Cover)

All references to HCPCS codes: Providers are responsible for determining the appropriate billing codes when submitting claims to the Medicare program, and should consult an attorney or other advisor to discuss specific situations in further detail.

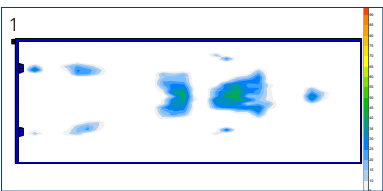
### Invacare® Solace® Prevention 1080 Mattress

A zoned top layer relieves pressure in the important susceptible body zones. The convoluted “fortress” cut design offers more surface area for patient support and relief. Two layers of high quality foam include softer head and heel sections. Available in 80" standard length or custom 76" or 84" (SPS1076, SPS1084) and optional raised side rail design (SPS1080RSR).

### Features

- 70 Denier nylon top
- 11 oz. tri-laminate vinyl bottom
- Fluid resistant
- Raised side rail design available
- Compliant with federal fire regulations

### HCPCS Code: E0184



1. Test shows subject in supine position demonstrating contact measurement between key pressure points using FSA pressure mapping technology. Subject: Female, 5'2", 105 lb.



Model #	Dimensions	Weight Capacity	Regulation Compliance	Limited Warranty
SPS1080	80" L 36" W 6" H	350 lb.	16 CFR 1632 16 CFR 1633	5 Years (Mattress) 1 Year (Cover)

### Invacare® Solace® Prevention 2080 Mattress

Added to the design are built-in side supports. The head and heel soft sections add comfort and protection, while the side supports provide stability and durability. Also available in bariatric sizes; SPS2080B42, SPS2080B48 (400 lb. weight capacity on bariatric models) and raised side rail design (SPS2080RSR).

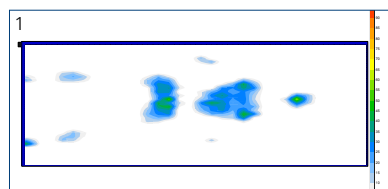
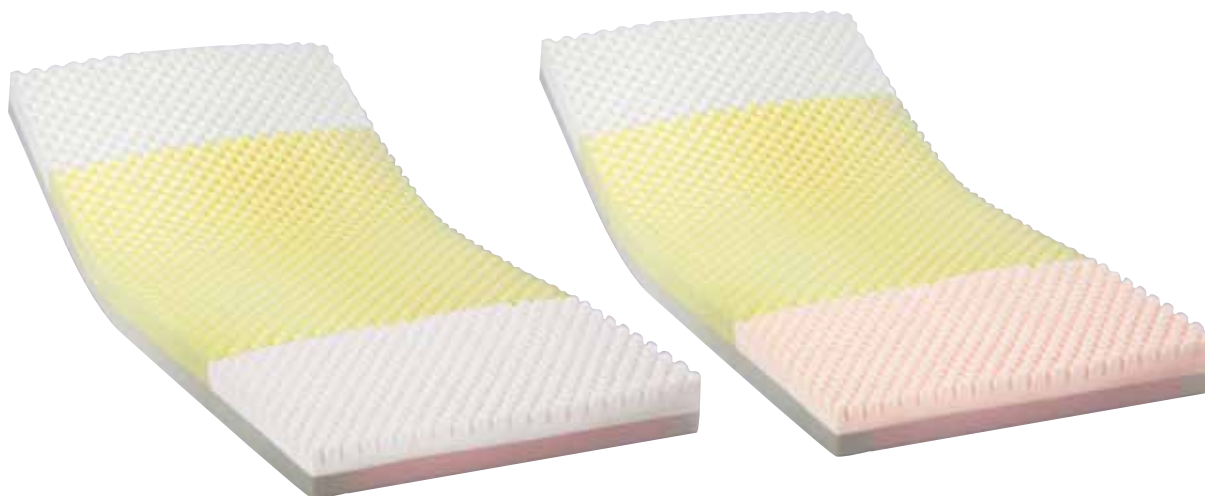
### Invacare® Solace® Prevention 3080 Mattress

The soft heel section is upgraded to visco-elastic foam to cradle the sensitive area. This product provides comfort and support with built-in side supports and dual layer "fortress" cut foam. Also available in 84" length (SPS3084) and raised side rail design (SPS3080RSR).

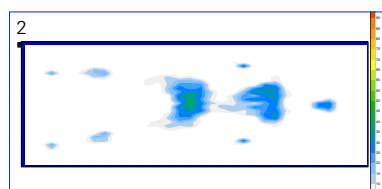
### Features

- Built-in side supports
- 70 Denier nylon top cover
- 11 oz. tri-laminate vinyl bottom
- Soft head and heel section
- Fortress cut convoluted foam

**HCPCS Code: E0184**



1. Test shows subject in supine position demonstrating contact measurement between key pressure points using FSA pressure mapping technology. Subject: Female, 5'2\", 105 lb.



2. Test shows subject in supine position demonstrating contact measurement between key pressure points using FSA pressure mapping technology. Subject: Female, 5'2\", 105 lb.

**Invacare Corporation**  
www.invacare.com

#### USA

One Invacare Way  
Elyria, Ohio  
44035-4190  
(800) 333-6900

#### Canada

570 Matheson Blvd. E.,  
Unit 8  
Mississauga, Ontario  
L4Z 4G4 Canada  
(800) 668-5324

©2012

Invacare Corporation.  
All rights reserved.  
Trademarks are identified  
by the symbols ™ and  
®. All trademarks are  
owned by or licensed  
to Invacare Corporation  
unless otherwise noted.  
Specifications are subject  
to change without  
notification.  
Form No. 10-134  
Rev. 03/12  
111229



Model #	Dimensions	Weight Capacity	Regulation Compliance	Limited Warranty
SPS2080	80\" L 36\" W 6\" H	350 lb.	16 CFR 1632	5 Years (Mattress) 1 Year (Cover)
SPS2080B42/ SPS2080B48	80\" L 42\" / 48\" W 6\" H	400 lb.	16 CFR 1633	5 Years (Mattress) 1 Year (Cover)
SPS3080	80\" L 36\" W 6\" H	350 lb.	16 CFR 1632 16 CFR 1633	5 Years (Mattress) 1 Year (Cover)

All references to HCPCS codes: Providers are responsible for determining the appropriate billing codes when submitting claims to the Medicare program, and should consult an attorney or other advisor to discuss specific situations in further detail.

