

Your First Name In Filters

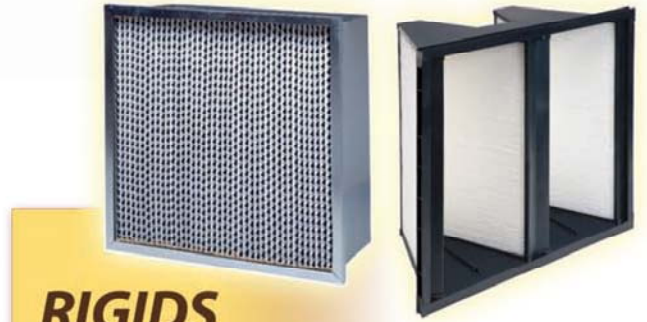


# Purolator

## WHOLESALE AIR FILTER SELECTION GUIDE



**BAGS**



**RIGIDS**



**PLEATS**



Patent #6,685,833 LPD



**CUSTOMS**



**HEPA**

# FILTER SELECTION OPTIONS

*HVAC Applications*

Typical Applications	Type of Air Handling Equipment	Typical Air	
		Prefilters	Purolator Product Selection
Residential Apartments, Condominiums Single Family Homes	Room Air Conditioners Residential Furnace & Air Conditioning Units	Not Applicable	F312, PuroPleat
Light Commercial, Industrial Hotels, Motels (Sleeping Rooms) Light Industrial Nursing Homes Schools (Classrooms) Small Office Buildings	Light Commercial Heating & Air Conditioning Units Packaged Terminal Air Conditioners Unit Ventilators Fan Coil Units	Not Applicable	F312, P312 Hi-E 40 HC, Hi-E 40, PAF 11, PURO-g13een StreamLine Series N SERVA-PAK, UNI-PAK Fiber Glass, Synthetic,
Commercial, Industrial, Institutional Airports Auditoriums Banks Bars, Cocktail Lounges Bowling Alleys Casinos Commercial Buildings Correctional Facilities Electric Utilities Food Processing Government Buildings Health Care Facilities Inpatient Care, Administrative, Sterile Processing, Food Processing, Storage, Soiled Holding Areas Hotels (Public Spaces) Industrial Plants - Offices, Plant Air Institutional Facilities Museums Residential (High Rise) Restaurants, Cafeterias Retail Stores, Super Markets Schools, Universities Sports Arenas, Gymnasiums Theaters Train Stations, Bus Depots Warehouses, Storage Areas	Rooftop Air Handling Units Central Station Air Handlers Built Up Frame Banks Side Access Housings	Disposable Panel Filters Pleated Filters  Filter Media & Frames Ring Panels, Links Poly Cube Filters Extended Surface Pocket Filters (40%) Automatic Roll Filters	F312, P312 Hi-E 40 HC, Hi-E 40, PAF 11, PURO-g13een StreamLine Series N Ultra II, Syn Pak SERVA-PAK, UNI-PAK Fiber Glass, Synthetic,
Sensitive Processes Health Care Protective Environment Rooms, Airborne Infection Isolation Rooms, Surgical Suites Labs Microelectronics, Semiconductor Pharmaceutical Production Photo Film Research Facilities Universities	Rooftop Air Handling Units Central Station Air Handlers Built Up Frame Banks Side Access Housings	Disposable Panel Filters Pleated Filters  Filter Media & Frames Ring Panels, Links Poly Cube Filters Extended Surface Pocket Filters (40%) Automatic Roll Filters	F312, P312 Hi-E 40 HC, Hi-E 40, PAF 11, PURO-g13een StreamLine Series N Ultra II, Syn Pak SERVA-PAK, UNI-PAK Fiber Glass, Synthetic,



#### Ducted Ceiling Modules

- Low profile design - only 5" deep
- Roomside adjustable diffuser
- Anodized extruded aluminum construction

#### DOMINATOR® High Efficiency Rigid Cell Extended Surface Filters

- Performance up to MERV 15
- Meets efficiency requirements to support LEED certification



#### ULTRA-CELL® HEPA, ULPA Filters

- 99.97%, 99.99%, 99.999% efficiencies
- Separator style media pack
- Wood or metal construction
- Individually tested

**Purolator**  
WHOLESALE

Patent #6,685,833 



Filter Products	
Final Filters	Purolator Product Selection
Disposable Panel Filters Pleated Filters (1") Polyurethane Foam Latex Coated Natural Fiber (Hog's Hair)	P312, F312 HI-E 40 HC, HI-E40, PAF 11, Foam Media Permalast
Disposable Panel Filters Pleated Filters Ring Panel Filters Slip-Ons Filter Media & Frames	HI-E 40 HC, HI-E40, PAF 11 PURO-g13een Series N Slip-Ons StreamLine Polyester media
Extended Surface Pocket Filters (50 - 90%) Extended Surface Rigid Cell Filters (60 - 95%)	SERVA-PAK, UNI-PAK, SERVA-CELL, SERVA-CELL Compact, SERVA-CELL Mini Pleat, SERVA-CELL 2VS, SERVA-CELL VA, AERO CELL, DOMINATOR 4" and 12"
Extended Surface Pocket Filters (50 - 90%) Extended Surface Rigid Cell Filters (60 - 95%) HEPA, ULPA Filters Disposable Ducted Ceiling Modules Replaceable Filter Ceiling Modules Fan / Filter Units	SERVA-PAK, UNI-PAK, SERVA-CELL, SERVA-CELL Compact, SERVA-CELL Mini Pleat, SERVA-CELL 2VS, SERVA-CELL PV, AERO CELL

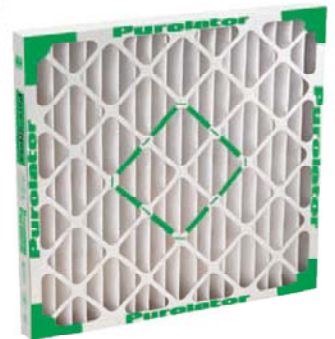


**Ring Panel Filters**

- Select from four styles
- Tackified media for high dust holding capacity, long service life
- MERV 6 to 7



**Mechanical MERV 8**

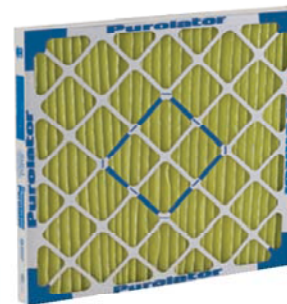


**Hi-E® 40 and Hi-E® 40HC Pleated Filters**

- High wet strength beverage board frame
- Durable double wall construction
- MERV 8

**Puro-g13een®**

- Pleated Filters**
- LEED/Green Compliant
  - 100% Synthetic Media
  - MERV 13



**PAF 11 Pleated Filters**

- Highest initial and average efficiency with electrostatically enhanced, needled media
- MERV 11

**MICROPAK® HEPA, ULPA Filters**

- 99.99%, 99.999%, 99.9995% efficiencies
- Mini-pleat media pack
- Anodized extruded aluminum cell sides
- All cell side configurations gasket seal, gel seal, knife edge



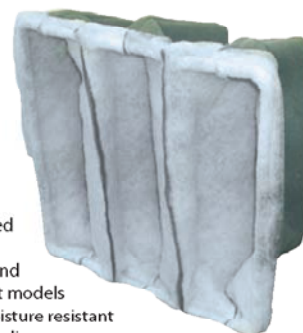
**SERVA-CELL® PV High Capacity Rigid Cell Filters**

- Mini-pleat media pack design for low resistance
- Rigid all plastic construction
- Dura-Tuff™ 100% synthetic media



**ULTRA II**

- Self-Supported Pocket Filters**
- Cube style and multi-pocket models
  - Durable, moisture resistant polyester media
  - Outstanding service life



**SERVA-CELL® High Efficiency Rigid Cell Filters**

- Rigid cell design for difficult operating conditions
- Moisture resistant construction
- Three efficiencies

# WHOLESALE AIR FILTER SELECTION GUIDE

Filter Efficiency Selection



Arrestance	Efficiency	MERV	Filter Type	Purolator Product Selection
60 - 80%	Less Than 20%	MERV 1 - 4	Disposable Panel Filters Permanent Metal Filters Fiberglass Media Latex Coated Natural Fiber Media Foam Media Automatic Roll Filter Media	Disposables PFAM Utility Glass Permalast® Foam Media
80 - 90%	Less Than 20%	MERV 5	Disposable Panel Filters Synthetic Media Automatic Roll Filter Media	StreamLine Polyester Media Autorolls
90 - 95%	20 - 30%	MERV 6 - 7	Self-Supported Pocket Filters Ring Panel Filters Pleated Filters	DPM7, Activator Series (2 Ply, 3 Ply) Series N, Hi-E® 40am, Key Pleat™ Mono Pleat
95%	30 - 40%	MERV 7 - 8	Self-Supported Pocket Filters Ring Panel Filters Pleated Filters	ULTRA II bags, Hi-E®40, Hi-E®40H, PAF11 (MERV11), Hi-E®40I, Hi-E®40CB, Hi-E® 40HC
95 - 98%	40 - 50%	MERV 8 - 9	Extended Surface Pocket Filters	SERVA-PAK 40% glass only
95 - 98%	50 - 60%	MERV 9 - 10	Extended Surface Rigid Cell Filters Extended Surface Pocket Filters	SERVA-PAK and SERVA-PAK S 50% AERO CELL and AERO CELL 50%
99%	60 - 70%	MERV 10 - 11	Extended Surface Pocket Filters  Extended Surface Rigid Cell Filters	SERVA-PAK 65%, SERVA-PAK S 65% UNI-PAK 65% SERVA-CELL® 65%, SERVA-CELL® Compact Series, SERVA-CELL® Mini Pleat 65%, SERVA-CELL® 2VS, SERVA-CELL® VA 65%, AERO CELL 60%, AERO CELL 60% Synthetic, DOMINATOR® 4" and 12"
99%	70 - 80%	MERV 12 - 13	Pleated Filters	PURO-g13een®
99%	80 - 90%	MERV 13 - 14	Extended Surface Pocket Filters  Extended Surface Rigid Cell Filters	SERVA-PAK 85%, SERVA-PAK S 85%, UNI-PAK 85%, SERVA-CELL® 85%, SERVA-CELL® Compact 85%, SERVA-CELL® Mini Pleat GL 85%, SERVA-CELL® 2VS, SERVA-CELL® VA 85%, DOMINATOR® 4" AERO CELL 85% FG and SYN
99%	90 - 95%	MERV 14 - 15	Extended Surface Pocket Filters  Extended Surface Rigid Cell Filters	SERVA-PAK 95%, UNI-PAK 95% SERVA-PAK S 95% SERVA-CELL® 955, SERVA-CELL® Com- pact 95%, SERVA-CELL® Mini Pleat 95%, SERVA-CELL® 2VS, SERVA-CELL® VA 95%, DOMINATOR® AERO CELL FG and SYN 95%
NA	95% DOP	MERV 16	Extended Surface Rigid Cell Filters	ULTRA CELL® 95%, SERVA-CELL® VA
NA	99.97% 99.99% 99.999% 99.9995%	NA	HEPA/ULPA Filters	ULTRA CELL®, MICROPACK®, Ducted Disposable, ULTRA CELL® V
<small>(1) Arrestance and Dust Spot Efficiency ratings are based on the ASHRAE 52.1 - 1992 test method.                      (2) Minimum Efficiency Reporting Value (MERV) ratings are based on the ASHRAE 52.2 test method.</small>				

PW-SELECTGUIDE-610



[www.purolatorair.com](http://www.purolatorair.com)



CLARCOR Air Filtration Products  
100 River Ridge Circle • Jeffersonville, IN 47130  
Customer Care Team: 1-866-925-2247 • Fax: 1-800-784-3458  
Email: [info@purolatorair.com](mailto:info@purolatorair.com) • [www.purolatorair.com](http://www.purolatorair.com)

Distributed by:

© 2010 CLARCOR Air Filtration Products.  
CLARCOR Air Filtration Products has a policy of continuous product research and development and reserves the right to change design and specifications without notice.  
Terms and Condition of Sale can be accessed in the "LOGIN" section at [www.purolatorair.com](http://www.purolatorair.com)