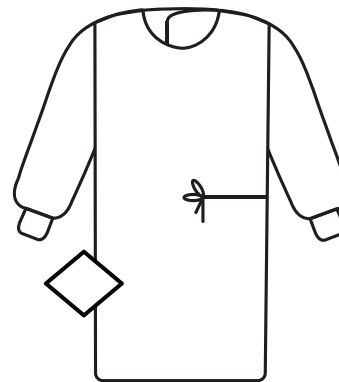


## Single Sterile Gowns

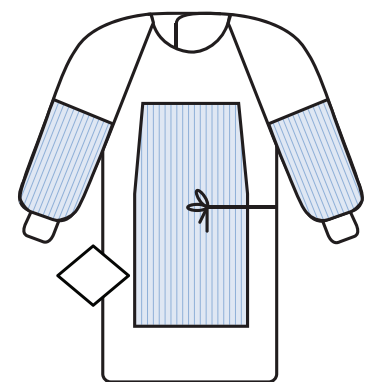
McKesson's single-use surgical gowns protect surgical patients and operating room personnel from the transfer of microorganisms, body fluids and particulate material. The fabric-reinforced i91-43 series gowns are considered to have a moderate to high level of protection due to the two layers of SMS in the critical zones A, B and C (front chest, belly and arms). Each comes with a hand towel and is designed with transfer tag, hook-and-loop neck closure and waist ties.

### Features and Benefits

- Provides protection, comfort and fit
- Includes a hand towel
- Resistant to tears, punctures, and fiber strains over the expected life of the product and under normal conditions of use
- All McKesson gowns' back panels meet the required AAMI Level 1 testing qualification for the back panel and AAMI Level 3 testing qualification for the gown critical zones\*
- The critical zones defined by ANSI/AAMI PB70 are the front of the gown and the gown sleeves to included the gown sleeve seams
- Non-reinforced gowns have a low to moderate fluid contact in the critical zones A, B, and C (front chest/belly and arms)\*
- The fabric-reinforced product (i91-43 Series) is considered to have a moderate to high level of protection due to the 2 layers of SMS in the critical zones A, B, and C (front chest/belly and arms)\*\*



MFR# 183-i90-8010-S1



MFR# 183-i91-4320-S1

\*The critical zone defined by ANSI/AAMI PB70 are the front of the gown an the gown sleeves to included the gown sleeve seams.

\*\* Fabric-Reinforced Surgical Gowns offer additional fabric in key areas for protection for invasive, manipulation-intensive procedures.

### Satisfaction Guaranteed

If you are not completely satisfied with any McKesson Brands product, you may return it for a full refund or credit.

### Never Compromise on Care<sup>SM</sup>

With McKesson Brands, you'll never have to compromise. We deliver quality products at competitive prices, backed by our 100% satisfaction guarantee. We have decades of experience in the market, and we offer you support and work to help ensure you have the products you need, when you need them—making it even easier for you to provide the best care for your patients.

The product information contained in this document, including the product images and additional product materials, was collected from various supplier sources. All product claims and specifications are those of the product suppliers and have not been independently verified by McKesson Medical-Surgical or its affiliates ("McKesson"). McKesson is not responsible for errors or omissions in the product information.

The properties of a product may change or be inaccurate following the posting or printing of the product information in the document, either in the print or online version. Caution should be exercised when using or purchasing any products from McKesson's online or print documents by closely examining the product packaging and the labeling prior to use.

Due to product changes, information listed in this document is subject to change without notice. This information is placed solely for your convenience in ordering and McKesson disclaims all responsibility for its completeness and accuracy, whether or not the inaccuracy or incompleteness is due to fault or error by McKesson.

## SET-IN SLEEVES

NON-REINFORCED, NON-WOVEN			
MFR #	SIZE	LENGTH	QTY
183-i90-8010-S1	Medium	45 inches (114 cm)	1 ea/pk, 32 pk/cs
183-i90-8020-S1	Large	50 inches (127 cm)	1 ea/pk, 30 pk/cs
183-i90-8030-S1	X-Large	52 inches (132 cm)	1 ea/pk, 28 pk/cs
183-i90-8040-S1	XX-Large	53 inches (135 cm)	1 ea/pk, 26 pk/cs
183-i90-8050-S1	XXX-Large	61 inches (155 cm)	1 ea/pk, 24 pk/cs
NON-REINFORCED, SOFT NON-WOVEN			
MFR #	SIZE	LENGTH	QTY
183-i90-7010-S1	Medium	45 inches (114 cm)	1 ea/pk, 32 pk/cs
183-i90-7020-S1	Large	50 inches (127 cm)	1 ea/pk, 30 pk/cs
183-i90-7030-S1	X-Large	52 inches (132 cm)	1 ea/pk, 28 pk/cs
183-i90-7040-S1	XX-Large	53 inches (135 cm)	1 ea/pk, 26 pk/cs
183-i90-7050-S1	XXX-Large	61 inches (155 cm)	1 ea/pk, 24 pk/cs

## RAGLAN SLEEVES

FABRIC REINFORCED, NON-WOVEN			
MFR #	SIZE	LENGTH	QTY
183-i91-4320-S1	Large	50 inches (127 cm)	1 ea/pk, 24 pk/cs
183-i91-4330-S1	X-Large	52 inches (132 cm)	1 ea/pk, 22 pk/cs
183-i91-4340-S1	XX-Large	53 inches (135 cm)	1 ea/pk, 22 pk/cs

McKesson Medical-Surgical  
 9954 Mayland Drive  
 Richmond, VA 23233  
[mms.mckesson.com/mckesson-brands](http://mms.mckesson.com/mckesson-brands)

Post-Acute Care and Home Health  
 800.347.2456

Home Medical Equipment  
 888.822.8111

Primary Care  
 866.625.2679

McKesson Brands Support  
 800.777.4908