



**DISINFECTANT ATOMIZING SPRAYER**

---

# Instruction Manual

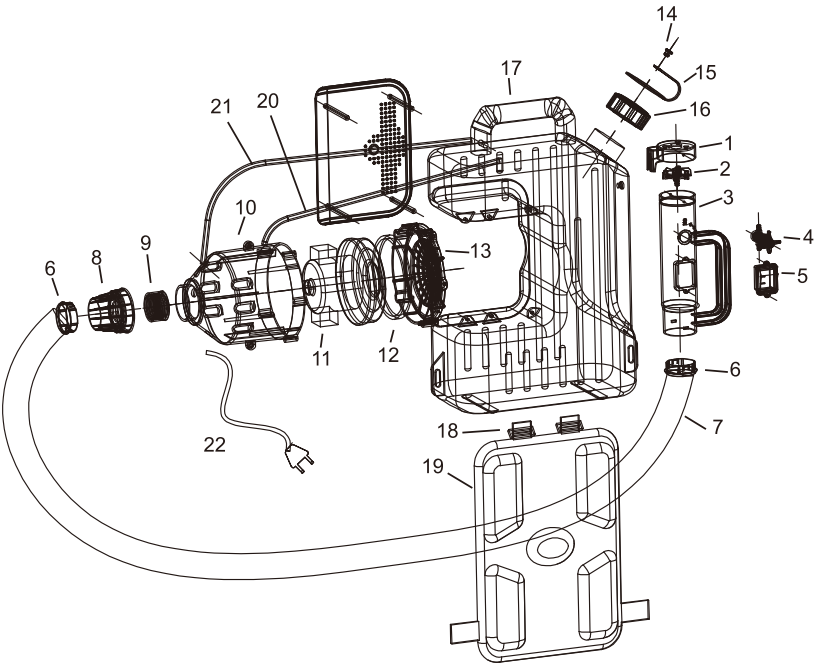
[zogics.com](http://zogics.com)





DISINFECTANT ATOMIZING SPRAYER

Tank Capacity: 2.6 Gallons (10 Liter)  
SKU: Z-DAS



Zogics Disinfectant Atomizing Sprayer Parts List

S/N	NAME	S/N	NAME
1	Wind scoop	12	Sealing gasket for motor
2	Air guide	13	Motor cover
3	Handle	14	Buckle
4	On/off Chemical valve	15	Anti-drop tape
5	On/off Power switch	16	Tank lid
6	Sealing gasket for hose	17	Chemical tank
7	Protective hose	18	Shoulder strap
8	Hose joint	19	Back cushion
9	Hose plug	20	Intake pipe
10	Motor hood	21	Liquid transfer pipe
11	Motor	22	Power cable

**Before use, read this instruction manual carefully. If you have any questions, please contact us directly at [hello@zogics.com](mailto:hello@zogics.com) or 888.623.0088. Zogics is not responsible for accidents or damage caused by improper operation.**

### Application

Zogics Disinfectant Atomizing Sprayer is a high-efficiency sanitizing and disinfecting tool that is designed to be used in a variety of commercial locations and industries —ideal for large-scale applications of disinfecting solution in public facilities, such as airports, hospitals, hotels, offices, restaurants, fitness clubs, and more.

### Warning

1. DO NOT direct spray highly-toxic pesticides, undiluted pesticides or banned pesticides/chemicals. Comply with safety instructions provided by the manufacturer when using chemical solutions.
2. For safety, the tank CANNOT be filled with flammable, explosive, or highly-volatile chemicals, such as gasoline, alcohol, phenylacetone, etc. DO NOT add highly-corrosive liquid, such as caustic soda, hydrochloric acid, etc. (Keep the machine dry. In order to avoid an electric shock, DO NOT operate the power switch with wet hands.)
3. Operator should wear personal protective equipment such as protective clothing, gloves, safety glasses, and masks.
4. This machine can only be operated by a person trained in the performance, operation, and safety of the machine. Keep away from children.

### Operation

1. Preparation: Plug into power outlet. Turn on the power switch to check that the motor is running correctly, and then turn the power off. Add the desired solution with the filter funnel (included). Tighten the tank lid.
2. Power on: Turn the power switch to (ON). Adjust the spray volume to the appropriate requirements, then start to spray.
3. Power off: Raise the spray nozzle higher than the tank and turn the power switch to (OFF). Keep the spray nozzle raised for about 2–3 seconds after you turn the power off. This lets the remaining liquid in the pipe reflux into the tank and avoids solution backing up in the pipe which may cause moisture damage to the motor. Lastly, turn off the adjusting nut to prevent outflow when adding solution next time the unit is used.
4. When the sprayer is in use, the high-speed gas flow will cause the sprayer and the pipe to heat up. This is normal.

### Usage Direction

1. The supply voltage should match the machine's requirements. (110V/50Hz)
2. DO NOT fold or damage the pipe, and avoid metal and other sharp objects that may puncture the pipe.
3. DO NOT turn the power switch on and off frequently, as this may damage the switch and the motor. If you hear any abnormal sounds during usage, shut down the unit immediately, cut off power, and contact professional personnel for repair. If you cannot resolve the problem, please contact us directly (non-professionals are strictly prohibited from disassembling & working on unit).
4. DO NOT use for an extended time under high humidity or in extreme heat or rain. Excess humidity may cause internal corrosive damage.
5. When storing, keep the unit in a dry and cool place. DO NOT let children have access to the machine.
6. Keep the machine dry. Operating the power switch when hands are wet may cause electric shock.
7. When the machine tank is full with solution, be careful not to spill or dump any solution out of the tank. Pay particular attention when transporting the unit.
8. After spraying, we recommend that you clean the machine with water. When finished spraying, the sprayer should be cleaned and kept in a cool, dry place. Avoid direct sunlight that may cause accelerated plastic aging.

### Technical Specifications

Item No.	Z-DAS
Tank Capacity	2.6 Gal (10L)
Packing size	18.5" x 7.5" x 18.9" (47 x 19 x 48 cm)
Net Weight	9 lbs (4.1 kgs)
Gross Weight	10.8 lbs (4.9 kgs)
Rated Voltage	110V/50Hz
Motor Power	1400W
Particle Size	20–50 microns (variable)
Max Flow Rate	750 ML/min
Horizontal Coverage	16.5 to 19.7 ft (5 to 6 meters)
Vertical Coverage	5 to 6.5 ft (1.5 to 2 meters)

## Problems & Recommended Solutions

Problem	Reasons	Solution
Fan is not running.	<ol style="list-style-type: none"> <li>1. Power cord is loose, poor contact, or power copper core is broken.</li> <li>2. Power switch fault.</li> <li>3. Motor fault.</li> <li>4. Motor carbon brush is rusted.</li> </ol>	<ol style="list-style-type: none"> <li>1. Check power plug, socket, or power cord.</li> <li>2. Check/replace power switch.</li> <li>3. Check/repair motor.</li> <li>4. Check/replace motor brush.</li> </ol>
Machine is running, but not spraying.	<ol style="list-style-type: none"> <li>1. Chemical tube or valve is blocked.</li> <li>2. Chemical tube or tank tube is folded.</li> <li>3. Chemical tube fell off.</li> <li>4. Air inlet is blocked.</li> </ol>	<ol style="list-style-type: none"> <li>1. Clean or replace.</li> <li>2. Check chemical tube and unfold if folded.</li> <li>3. Reset chemical tube.</li> <li>4. Clean &amp; clear air inlet.</li> </ol>
Intermittent spraying or small spray.	<ol style="list-style-type: none"> <li>1. Chemical tube is blocked.</li> <li>2. Chemical tube is folded.</li> <li>3. Chemical tube is damaged.</li> <li>4. Chemical tube fell off.</li> </ol>	<ol style="list-style-type: none"> <li>1. Clean chemical tube.</li> <li>2. Unfold chemical tube.</li> <li>3. Replace chemical tube.</li> <li>4. Reset chemical tube.</li> </ol>
Machine is making abnormal sounds.	<ol style="list-style-type: none"> <li>1. The air inlet is blocked.</li> <li>2. Motor bearing is damaged or carbon brush ran out.</li> </ol>	<ol style="list-style-type: none"> <li>1. Clean &amp; clear air inlet.</li> <li>2. Repair or replace motor.</li> </ol>
Poor atomization, spray nozzle dripping.	<ol style="list-style-type: none"> <li>1. Adjusting nut turned too much.</li> <li>2. Air inlet is blocked.</li> </ol>	<ol style="list-style-type: none"> <li>1. Turn adjusting nut so it's not opened as much.</li> <li>2. Clean &amp; clear air inlet.</li> </ol>
Sprayer temperature is too high.	<ol style="list-style-type: none"> <li>1. Sprayer has been used continuously for too long.</li> <li>2. Supply voltage does not match.</li> <li>3. Air inlet or outlet is blocked.</li> <li>4. Motor is worn out.</li> </ol>	<ol style="list-style-type: none"> <li>1. Stop usage for awhile.</li> <li>2. Select matching voltage.</li> <li>3. Clean &amp; clear</li> <li>4. Repair or replace motor.</li> </ol>

### ***Need help?***

888.623.0088 • [hello@zogics.com](mailto:hello@zogics.com) • [zogics.com](http://zogics.com)



**DISINFECTANT ATOMIZING SPRAYER**

---

# Instruction Manual

[zogics.com](http://zogics.com)

