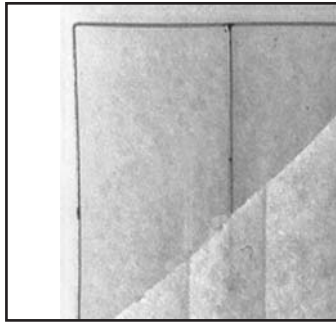


Rugged, Heat-sealed, Construction

Flanders Ring Panel and Cube filters are made by heat sealing layers of synthetic filtering media together over an interior, corrosion-resistant steel support frame. An overcut of media outside the seal forms a built-in gasket (selvage) between the wire support frame and holding frame, which secures the filter and prevents air bypass. This special feature allows these filters to be installed without the use of retainer fasteners



Link Panels

Flanders Ring Panel filters can be ordered as standard single panels or as link panels. A link panel is made by heat sealing individual Ring Panel filter panels end to end to achieve desired dimensions.

Sleeve Panels

Sleeve Panels are nearly identical to the standard Ring Panel. The only major difference in construction with the Sleeve Panel is that one end is left unsealed. Therefore, the interior support frame can be removed and used over and over again, with just the soiled media thrown away. This is more economical and makes disposal easier.

Cubes

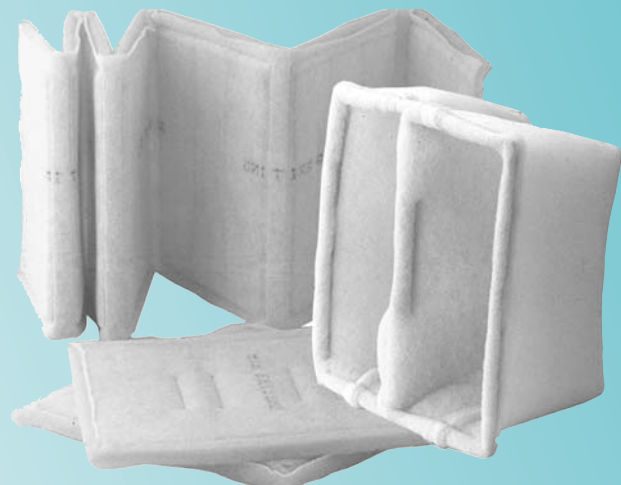
Cubes are internally supported filters similar to the Polyester Panel. The exception is greater surface area for contamination capture. Unitary, 2-pocket or 3-pocket construction is available throughout our entire product offering. Cubes are available with 13/16" thick headers for side access installations or other systems where a header is required.

A Moisture-resistant Alternative

Because these filters are made with only metal and synthetic materials, they are an excellent alternative to paper-frame filters in high moisture areas because they are naturally moisture-resistant and will not deteriorate or warp in wet or humid conditions.

Important Features

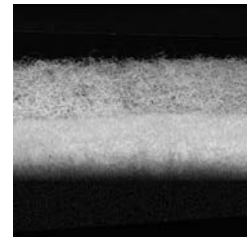
- Heat sealed construction
- Tackified, progressive density media
- 2, 3 and 4-ply combinations
- 100% moisture resistant
- 9 gauge galvanized wire frame
- Merv 6-10 available
- UL 900 Class 2



Series ST55-Polyester Panel

Models ST55R-xxxx Ring Panel and ST55L-xxxx Link

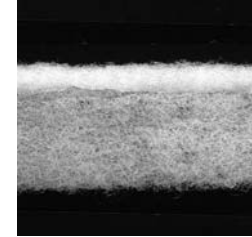
Two-ply 1" nominal media construction using a 1/2" nominal white polyester on the upstream, followed by a 1/2" nominal green super tackified polyester downstream.



Series 225T-Polyester Panel or Cubes

Models 225RT-xxxx Ring Panel, 225LT-xxxx Link, CUBx225T-xxxxxx Cube

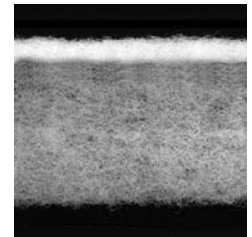
Two-ply 1" nominal media construction, using a 3/4" nominal white polyester on the up-stream, with internal tackification followed by a 1/4" dense white polyester downstream.



Series 325T-Polyester Panel or Cubes

*Models 325RT-xxxx Ring Panels and 325LT-xxxx Links
CUBx325T-xxxxxx Cube*

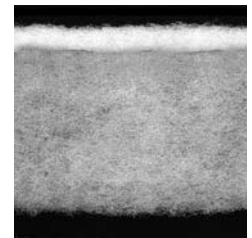
Three-ply 1-3/4" nominal media construction, using a 1-1/2" nominal white/green dual density, multidenier polyester upstream, with internal tackification followed by a 1/4" dense white polyester downstream.



Series 425T-Polyester Panel or Cubes

*Models 425RT-xxxx Ring Panels and 425LT-xxxx Links
CUBx425T-xxxxxx Cube*

Four-ply 1-3/4" nominal media construction, using a 1-1/2" nominal white/green/white tridensity, multidenier polyester upstream, with internal tackification followed by a 1/4" dense white polyester downstream.



Use link panels for easy installation in filter tracks and eliminate air bypass!

Link panels make installation easy. Just unfold the filter and slide it into the track as one continuous, long filter. When time to replace it, the whole filter comes out easily in one piece. Plus, the sealing between links and the generous selvage eliminates air bypass.

Goes in as one piece. Comes out as one piece.

Overcut gaskets against air bypass.



Link Panels are heat-sealed together.

Moisture resistant materials

REPRESENTED BY:

Flanders PrecisionAire
Foremost in Air Filtration

Toll Free: 1-800-637-2803