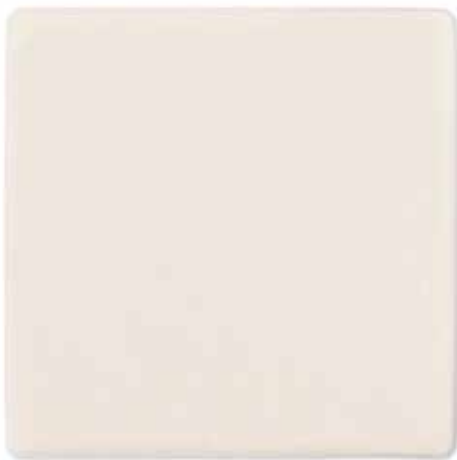


ColActive® PLUS

Collagen Matrix Dressing



✓ FACILITATES NATURAL WOUND HEALING

EDTA and collagen in ColActive® Plus target and deactivate elevated MMP Activity*.

✓ MOIST WOUND ENVIRONMENT

Alginate and CMC in ColActive® Plus allows the dressing to absorb up to 20 times its weight in wound drainage, while still maintaining an optimal moisture balance for wound closure*.

✓ CLINICAL TRACK RECORD

Over ten years of clinical success in treating chronic stalled wounds.

HOW DOES IT WORK?

ColActive® Plus is an advanced wound dressing made from collagen, sodium alginate, carboxymethylcellulose (CMC), and ethylenediaminetetraacetic acid (EDTA). ColActive® Plus is a topically applied wound dressing that will transform into a soft gel sheet when in contact with wound exudates. The dressing maintains a moist wound environment that aids in the formation of granulation tissue and epithelialization. The EDTA in the dressing removes zinc to inhibit the activity of matrix metalloproteinases (MMP), thus creating a suitable environment for wound healing. ColActive® Plus dressings may be trimmed and layered for the management of deep wounds.

WHEN TO USE:

ColActive® Plus is indicated for management of full and partial thickness wounds including: pressure ulcers, diabetic ulcers, ulcers caused by mixed vascular aetiologies, venous ulcers, donor and graft sites, abrasions, traumatic wounds healing by secondary intention, dehisced surgical wounds, first and secondary degree burns.

WHEN NOT TO USE:

ColActive® Plus dressing should not be used on patients with a known allergy or sensitivity to animal derived collagen, any other ingredient or on third degree burns.

*Covalon Technologies Ltd., Data on file.



ColActive® PLUS

Collagen Matrix Dressings

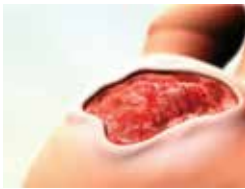
1-877-711-6055 | colactive@covalon.com

covalon
TECHNOLOGIES LTD.

ColActive® PLUS

HOW TO APPLY:

1. Debride and irrigate the wound bed with an appropriate wound cleanser or distilled water before application.
2. Cut the dressing to fit the exact wound size. For heavily exudating wounds, apply the dressing directly to the wound bed. For dry wounds with very little exudate, moisten the wound bed with distilled water to begin the gelling process.
3. Cover the ColActive® Plus with an appropriate secondary dressing.
4. Change dressings daily or as good nursing practice dictates.



1.



2.



3.



4.

CARE AND REMOVAL:

1. Remove the secondary dressing with care. Gently remove ColActive® Plus ensuring that the dressing removal does not damage any newly formed tissues.
2. Use an appropriate wound cleanser or distilled water to cleanse the wound site prior to applying a new ColActive® Plus dressing as per application instructions.

AVAILABILITY:

COLACTIVE® PLUS

Collagen Matrix Dressing

Reference Number	HCPCS	Size (cm)	Dressings per Carton / Cartons per Case
TWBC1016 5550220	A6021 —	5cmx5cm	10/10
TWBC1018 5550440	A6022 —	10cmx10cm	10/10
TWBC1035 5550770	A6023 —	18cmx18cm	10/10

NOTE:

- Please use TWBC reference numbers for U.S. CMS reimbursement.
- HCPCS codes contained in this document are provided for informational purposes only and represents no statement, promise, or guarantee by Covalon Technologies Ltd. concerning levels of reimbursement, payment, or charge.
- As with any medical device, always refer to the full instructions for use prior to application.



ColActive® PLUS
Collagen Matrix Dressings

1-877-711-6055 | colactive@covalon.com

covalon
TECHNOLOGIES LTD.