

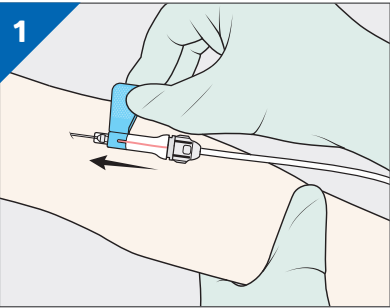
On-Guard® blood collection guide

Instructions for activation

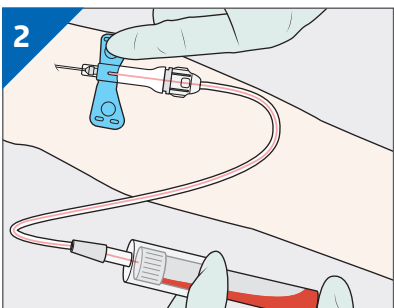


One-handed technique

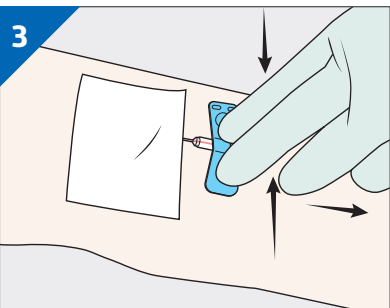
Before use: Ensure the female luer adapter is securely attached to the male adapter and that the male luer adapter is securely attached to the holder. Remove needle cap. **Perform venipuncture as follows:**



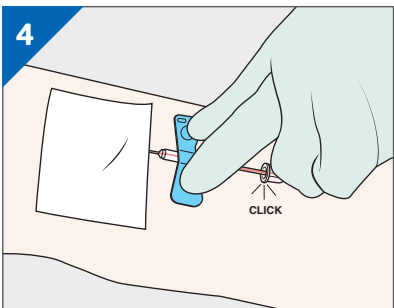
Hold the wings together.
Insert needle bevel side up into the patient's vein with a steady advance.



Observe a flash of blood in the transparent flashback chamber, indicating the vein has been accessed.
Push the empty collection tube into the interior needle.
Remove the collection tube once it has been filled and repeat as necessary with additional blood collection tubes.



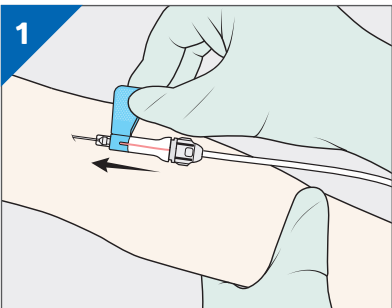
Place a gauze pad over the insertion site.
Anchor the device using your index finger and middle finger.
Activate the safety feature by pressing in both sides of the safety using your thumb and any other finger to release the lock.



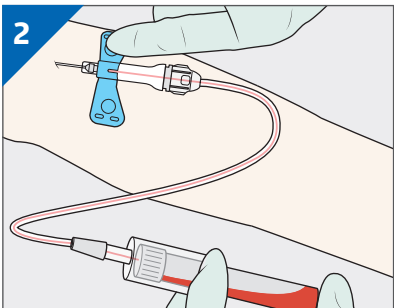
Pull back until an audible click is heard, indicating the safety feature has been activated.
After use: Dispose of all used materials in an appropriate container and wash hands.

Two-handed technique

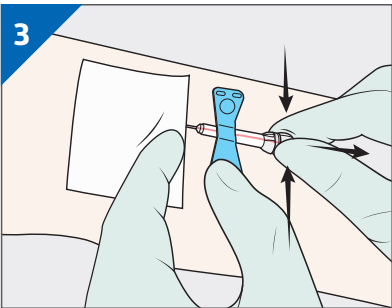
Before use: Ensure the female luer adapter is securely attached to the male adapter and that the male luer adapter is securely attached to the holder. Remove needle cap. **Perform venipuncture as follows:**



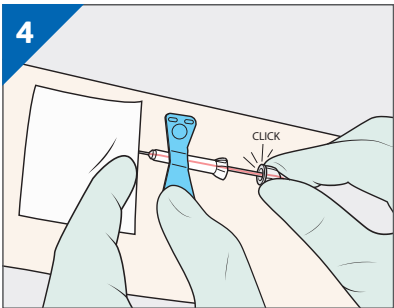
Hold the wings together.
Insert needle bevel side up into the patient's vein with a steady advance.



Observe a flash of blood in the transparent flashback chamber, indicating the vein has been accessed.
Push the empty collection tube into the interior needle.
Remove the collection tube once it has been filled and repeat as necessary with additional blood collection tubes.



Place a gauze pad over the insertion site.
Anchor the wing of the device with a thumb or finger.
Activate the safety feature by pressing in both sides of the safety to release the lock.



Pull back until an audible click is heard, indicating the safety feature has been activated.
After use: Dispose of all used materials in an appropriate container and wash hands.

Ordering information

Blood transfer and luer-lock device

Item No.	Description	Pkg.
BTRD	Blood transfer device	198/cs
ACSD	Luer lock access device	198/cs
DYNDLA	Luer adapter	1,000/cs
DYDNBCHLDR	Tube holder	1,000/cs

OnGuard blood collection sets

7" tubing

Item No.	Description	Pkg.
DYDNTNBC21G7	21 g x 0.75", Luer lock, 7" tubing	200/cs
DYDNTNBC23G7	23 g x 0.75", Luer lock, 7" tubing	200/cs
DYDNTNBC25G7	25 g x 0.75", Luer lock, 7" tubing	200/cs

12" tubing

Item No.	Description	Pkg.
DYDNTNBCS21G	21 g x 0.75", Luer lock, 12" tubing	200/cs
DYDNTNBCS23G	23 g x 0.75", Luer lock, 12" tubing	200/cs
DYDNTNBCS25G	25 g x 0.75", Luer lock, 12" tubing	200/cs

Without Luer adapter, 12" tubing

Item No.	Description	Pkg.
DYDNTNBC21GL	21 g x 0.75", no Luer, 12" tubing	200/cs
DYDNTNBC23GL	23 g x 0.75", no Luer, 12" tubing	200/cs
DYDNTNBC25GL	25 g x 0.75", no Luer, 12" tubing	200/cs

Pre-attached holder, 12" tubing

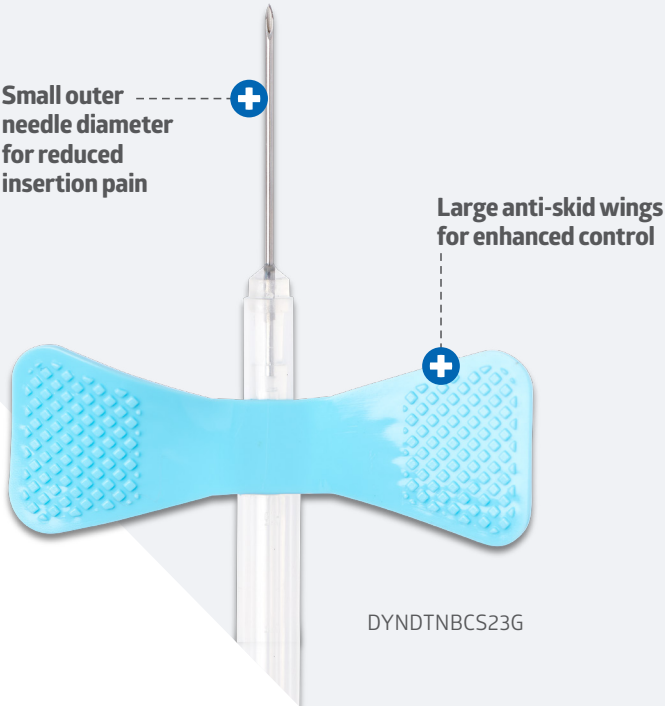
Item No.	Description	Pkg.
DYDNTNHBC21G	21 g x 0.75", holder, 12" tubing	200/cs
DYDNTNHBC23G	23 g x 0.75", holder, 12" tubing	200/cs
DYDNTNHBC25G	25 g x 0.75", holder, 12" tubing	200/cs

Order of blood draw

Draw order	Tube color	Name/additive	Inversions
1	Varies	Blood cultures	8–10
2	Light blue	Sodium citrate	3–4
3	Red	Clot activator	4–5
4	Gold	SST (Serum separator tube)	4–5
5	Light green	PST (Plasma separator tube)	8–10
6	Dark green	Sodium heparin	8–10
7	Lavender	EDTA	8–10
8	Gray	Sodium fluoride	8–10
9	Yellow	ACD solution	8–10

On-Guard blood collection sets

Compliant with OSHA Bloodborne Pathogens Standard



Scan with camera on your smartphone to open the link to the On-Guard blood collection instructional video