



DOMINATOR®

*High Efficiency Rigid Cell, Extended Surface Filters
4" (MERV 11 & 14) and 12" Depths (MERV 11 & 15)*

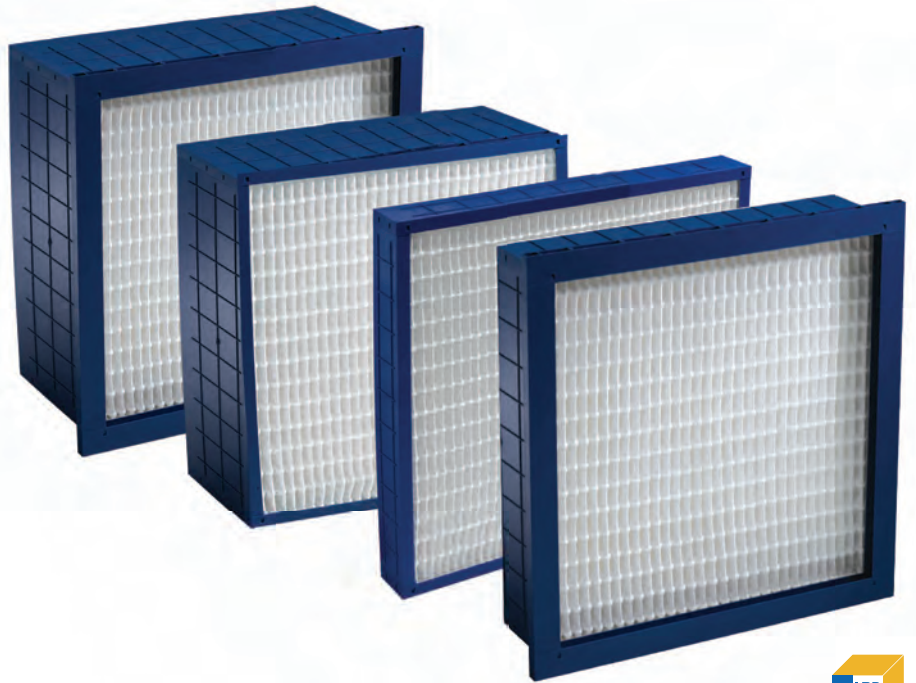
Dominator® is a high-efficiency, low initial pressure drop, rigid cell produced in both 4" and 12" depths. Two efficiencies are offered in each depth: MERVs 11 and 14 in the 4" depth and MERVs 11 and 15 in the 12" depth*. In either configuration, the Dominator will improve fine airborne particulate removal while maintaining, or reducing, your energy consumption and costs.

If your goal is LEED® Certification for your facility, the MERV 14 and 15 models can earn points in support of registered LEED project certification.

All Dominator media packs are made using CLARCOR's proprietary E-pleat™ technology. This remarkable process ensures pleat spacing that maximizes air flow and ensures full depth dust loading of the media. E-pleat technology and the 100% synthetic media delivers a sturdy, durable media pack that surpasses the characteristics of wet-laid glass and aluminum separators used in competitor products. With no metal used in the media pack, and cell sides made with high Impact Polystyrene (HIPS) plastic, Dominator filters are environmentally safe and fully incinerable.

For more information regarding the Dominator from Purolator, please contact your nearest Purolator Stocking Distributor, local Purolator Territory Manager or a Customer Care Associate at 1-866-925-2247. You can also click the Distributor Locator Button at www.purolatorair.com.

** Minimum Efficiency Reporting Values (MERV) are determined using ASHRAE Test Standard 52.2.*



4" offered in MERV 11 and 14 and 12" offered in MERV 11 and 15

Unique Channel Flow Molded Media:

- **4" is MERV 11 & 14; 12" is MERV 11 & 15**
- **Very Low Initial Resistance Reduces Energy Consumption; Lowers Energy Costs**
- **High Dust-Holding Capacity**
- **Light Weight all Plastic Cell Sides**
- **Class 1 per U.L. Standard 900**
- **MERV 14 and 15 filters earn points toward LEED Certification**

DOMINATOR

High Efficiency Extended Surface Filters with
Channel Flow Molded Media

4" Deep Filters - MERV 11 & 14

For use where space is limited. 4" deep **Dominator** filters operate at 500 FPM at substantially lower resistance than competitive 4" - 6" deep filters.

12" Deep Filters - MERV 11 & 15 Single Header Construction

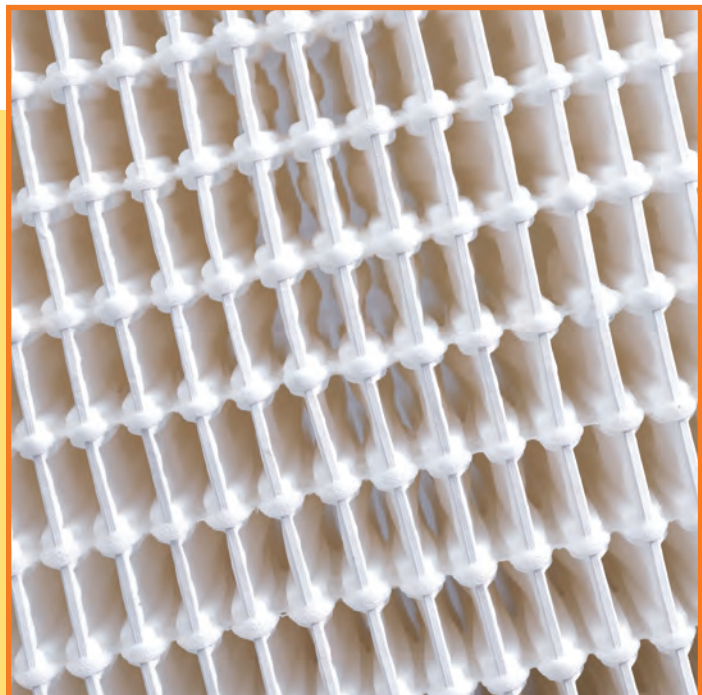
Dominator filters replace traditional 12" deep rigid cell filters operating at 500 - 625 FPM with substantially lower resistance.



E-pleat™ Technology - Unique Channel-Flow Molded Media Produces Lowest Resistance

Dominator media is molded into a series of preformed channels that direct the air smoothly through the filter. This unique process results in the lowest resistance of any high efficiency filter on the market. Low resistance maximizes energy savings.

Dominator Close up view shows how beads of adhesive applied to the media hold the channels open to permit free flow of air for low resistance and complete use of the media.

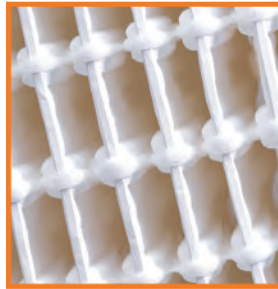


High Efficiency, Low Resistance,
Rigid Cell Construction Designed for
Difficult Operating Conditions



Glue Bead Adhesive Strips Stabilize Pleat Pack

Beads of adhesive applied to the media bond the pleats into a totally rigid, solid pack. The pleats hold their shape and the molded channels are held open for free flow of air in all types of operating conditions. No pleat deformation, no blocking off.



Rigid Cell Design Handles Difficult Operating Conditions

Rigid cell design, all plastic components and 100% synthetic media make Dominator filters ideal for the most demanding operating conditions, including variable air volume systems, high air flow, turbulence, repeated fan shut down, high moisture, and some chemical or corrosive conditions. These filters are designed for tough installations.

Full Media Exposure Produces High Dust Holding Capacity

The E-pleat design not only produces low resistance, it also allows the media to be completely exposed to dirt laden air. Dirt loads evenly over every square inch of filter surface area for maximum dust holding capacity and long service life.

All Plastic Construction – Completely Incinerable, Light Weight

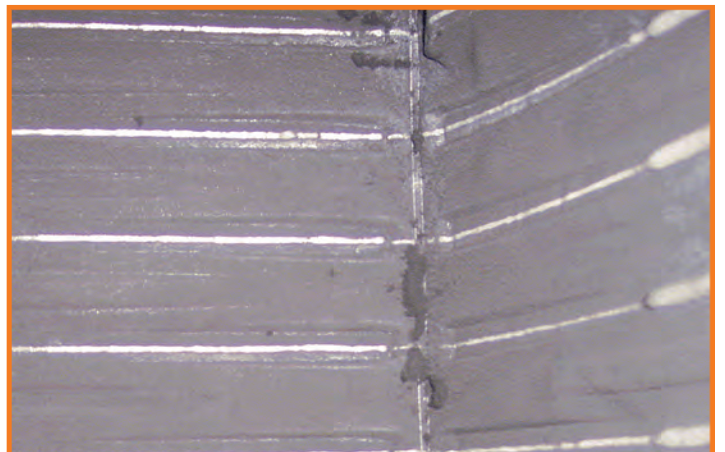
The cell sides are made using high strength, HIPS plastic. They are moisture, chemical and corrosion resistant. Dominator filters contain no metal components – no rust, no corrosion. The elimination of metal also makes these filters completely incinerable and light weight.



Dominator filters are only offered in standard sizes.

100% Synthetic Media

Dominator filters are made with 100% synthetic media. It is extremely durable, resists tearing, abrasion and is highly damage resistant. No more media damage during shipping, handling or installation. Dominator media is also unaffected by exposure to moisture and some chemicals. This media is just plain tough.



See how the preformed channels allow dirt to be collected all the way to the back of the pleats. Every square inch of media is fully utilized for maximum dust capacity.

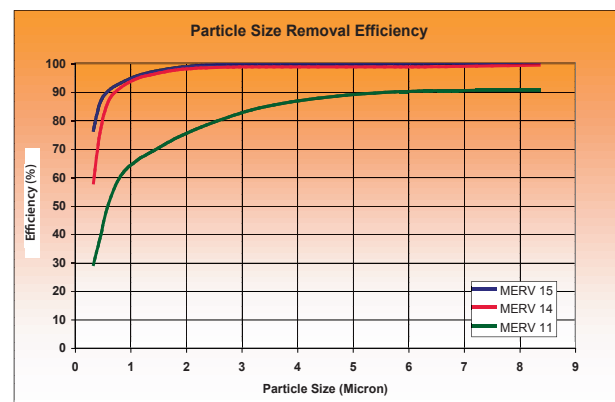
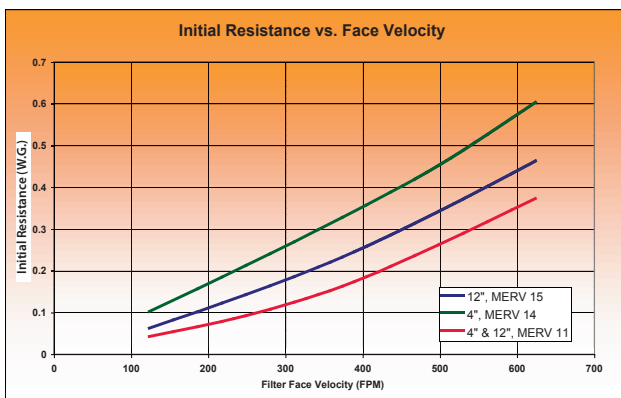
DOMINATOR®

High Efficiency Extended Surface Filters
with Channel Flow Molded Media



| Model Number | Nominal Size (WxHxD) Inches | Actual Size (WxHxD) Inches | Rated Air Flow Capacity (CFM) | Initial Resistance (In. W. G.) @Rated Air Flow MERV 14,15 | Initial Resistance (In. W. G.) @Rated Air Flow MERV 11 | Recommended Final Resistance (In. W. G.) |
|----------------------------------|-----------------------------|--|-------------------------------|---|--|--|
| 12" Packs - Box Style | | | | | | |
| DR65B-4412 | 24x24x12 | 23 $\frac{3}{8}$ x 23 $\frac{3}{8}$ x 11 $\frac{1}{2}$ | 2000 | - | .19" | 1.5" |
| DR65B-0412 | 20x24x12 | 19 $\frac{1}{2}$ x 23 $\frac{3}{8}$ x 11 $\frac{1}{2}$ | 1650 | - | .19" | 1.5" |
| DR65B-0012 | 20x20x12 | 19 $\frac{1}{2}$ x 19 $\frac{1}{2}$ x 11 $\frac{1}{2}$ | 1400 | - | .19" | 1.5" |
| DR65B-2412 | 12x24x12 | 11 $\frac{1}{2}$ x 23 $\frac{3}{8}$ x 11 $\frac{1}{2}$ | 1000 | - | .19" | 1.5" |
| DR95B-4412 | 24x24x12 | 23 $\frac{3}{8}$ x 23 $\frac{3}{8}$ x 11 $\frac{1}{2}$ | 2000 | .28" | - | 1.5" |
| DR95B-0412 | 20x24x12 | 19 $\frac{1}{2}$ x 23 $\frac{3}{8}$ x 11 $\frac{1}{2}$ | 1650 | .28" | - | 1.5" |
| DR95B-0012 | 20x20x12 | 19 $\frac{1}{2}$ x 19 $\frac{1}{2}$ x 11 $\frac{1}{2}$ | 1400 | .28" | - | 1.5" |
| DR95B-2412 | 12x24x12 | 11 $\frac{1}{2}$ x 23 $\frac{3}{8}$ x 11 $\frac{1}{2}$ | 1000 | .28" | - | 1.5" |
| 12" Packs - Single Header | | | | | | |
| DR65-4412 | 24x24x12 | 23 $\frac{3}{8}$ x 23 $\frac{3}{8}$ x 11 $\frac{1}{2}$ | 2000 | - | .26" | 1.5" |
| DR65-0412 | 20x24x12 | 19 $\frac{1}{2}$ x 23 $\frac{3}{8}$ x 11 $\frac{1}{2}$ | 1650 | - | .26" | 1.5" |
| DR65-0012 | 20x20x12 | 19 $\frac{1}{2}$ x 19 $\frac{1}{2}$ x 11 $\frac{1}{2}$ | 1400 | - | .26" | 1.5" |
| DR65-2412 | 12x24x12 | 11 $\frac{1}{2}$ x 23 $\frac{3}{8}$ x 11 $\frac{1}{2}$ | 1000 | - | .26" | 1.5" |
| DR95-4412 | 24x24x12 | 23 $\frac{3}{8}$ x 23 $\frac{3}{8}$ x 11 $\frac{1}{2}$ | 2000 | .34" | - | 1.5" |
| DR95-0412 | 20x24x12 | 19 $\frac{1}{2}$ x 23 $\frac{3}{8}$ x 11 $\frac{1}{2}$ | 1650 | .34" | - | 1.5" |
| DR95-0012 | 20x20x12 | 19 $\frac{1}{2}$ x 19 $\frac{1}{2}$ x 11 $\frac{1}{2}$ | 1400 | .34" | - | 1.5" |
| DR95-2412 | 12x24x12 | 11 $\frac{1}{2}$ x 23 $\frac{3}{8}$ x 11 $\frac{1}{2}$ | 1000 | .34" | - | 1.5" |
| 4" Packs - Box Style | | | | | | |
| DR65-4404 | 24x24x4 | 23 $\frac{3}{8}$ x 23 $\frac{3}{8}$ x 3 $\frac{3}{8}$ | 2000 | - | .23" | 1.5" |
| DR65-0504 | 20x25x4* | 19 $\frac{1}{2}$ x 24 $\frac{1}{2}$ x 3 $\frac{3}{8}$ | 1750 | - | .23" | 1.5" |
| DR65-0404 | 20x24x4 | 19 $\frac{1}{2}$ x 23 $\frac{3}{8}$ x 3 $\frac{3}{8}$ | 1650 | - | .23" | 1.5" |
| DR65-0004 | 20x20x4 | 19 $\frac{1}{2}$ x 19 $\frac{1}{2}$ x 3 $\frac{3}{8}$ | 1400 | - | .23" | 1.5" |
| DR65-6504 | 16x25x4* | 15 $\frac{1}{2}$ x 24 $\frac{1}{2}$ x 3 $\frac{3}{8}$ | 1400 | - | .23" | 1.5" |
| DR65-6004 | 16x20x4 | 15 $\frac{1}{2}$ x 19 $\frac{1}{2}$ x 3 $\frac{3}{8}$ | 1100 | - | .23" | 1.5" |
| DR65-2404 | 12x24x4 | 11 $\frac{1}{2}$ x 23 $\frac{3}{8}$ x 3 $\frac{3}{8}$ | 1100 | - | .23" | 1.5" |
| DR95-4404 | 24x24x4 | 23 $\frac{3}{8}$ x 23 $\frac{3}{8}$ x 3 $\frac{3}{8}$ | 2000 | .43" | - | 1.5" |
| DR95-0504 | 20x25x4* | 19 $\frac{1}{2}$ x 24 $\frac{1}{2}$ x 3 $\frac{3}{8}$ | 1750 | .43" | - | 1.5" |
| DR95-0404 | 20x24x4 | 19 $\frac{1}{2}$ x 23 $\frac{3}{8}$ x 3 $\frac{3}{8}$ | 1650 | .43" | - | 1.5" |
| DR95-0004 | 20x20x4 | 19 $\frac{1}{2}$ x 19 $\frac{1}{2}$ x 3 $\frac{3}{8}$ | 1400 | .43" | - | 1.5" |
| DR95-6504 | 16x25x4* | 15 $\frac{1}{2}$ x 24 $\frac{1}{2}$ x 3 $\frac{3}{8}$ | 1400 | .43" | - | 1.5" |
| DR95-6004 | 16x20x4 | 15 $\frac{1}{2}$ x 19 $\frac{1}{2}$ x 3 $\frac{3}{8}$ | 1100 | .43" | - | 1.5" |
| DR95-2404 | 12x24x4 | 11 $\frac{1}{2}$ x 23 $\frac{3}{8}$ x 3 $\frac{3}{8}$ | 1100 | .43" | - | 1.5" |
| 4" Packs - Single Header | | | | | | |
| DR95-H-2404 | 12x24x4 | 11 $\frac{1}{2}$ x 23 $\frac{3}{8}$ x 3 $\frac{3}{8}$ | 1100 | .48" | - | 1.5" |
| DR95-H-0004 | 20x20x4 | 19 $\frac{1}{2}$ x 19 $\frac{1}{2}$ x 3 $\frac{3}{8}$ | 1400 | .48" | - | 1.5" |
| DR95-H-0404 | 20x24x4 | 19 $\frac{1}{2}$ x 23 $\frac{3}{8}$ x 3 $\frac{3}{8}$ | 1650 | .48" | - | 1.5" |
| DR95-H-4404 | 24x24x4 | 23 $\frac{3}{8}$ x 23 $\frac{3}{8}$ x 3 $\frac{3}{8}$ | 2000 | .48" | - | 1.5" |
| DR65-H-2404 | 12x24x4 | 11 $\frac{1}{2}$ x 23 $\frac{3}{8}$ x 3 $\frac{3}{8}$ | 1100 | - | .27" | 1.5" |
| DR65-H-0004 | 20x20x4 | 19 $\frac{1}{2}$ x 19 $\frac{1}{2}$ x 3 $\frac{3}{8}$ | 1400 | - | .27" | 1.5" |
| DR65-H-0404 | 20x24x4 | 19 $\frac{1}{2}$ x 23 $\frac{3}{8}$ x 3 $\frac{3}{8}$ | 1650 | - | .27" | 1.5" |
| DR65-H-4404 | 24x24x4 | 23 $\frac{3}{8}$ x 23 $\frac{3}{8}$ x 3 $\frac{3}{8}$ | 2000 | - | .27" | 1.5" |

* Reverse size pleat on 25" height product.



IMPORTANT NOTES:

1. All performance data is based on the ASHRAE 52.2 Test Standard
2. Width and height dimensions are interchangeable. DOMINATOR filters can be installed with the pleats vertical or horizontal
3. Continuous Operating Temperature: 140°F (60°C).

Underwriters Laboratories Inc. Classification:

DOMINATOR filters are classified Class 1 per U.L. Standard 900.

Energy Savings Calculator available online at www.purolatorair.com

LEED (*Leadership in Energy and Environment Design*) addresses all building types and emphasizes state-of-the-art strategies in five areas: sustainable site development, water savings, energy efficiency, materials and resources selection, and indoor environmental quality. For more information please visit: www.usgbc.org

P-DOM-1110



www.purolatorair.com



Distributed by:



CLARCOR Air Filtration Products

100 River Ridge Circle • Jeffersonville, IN 47130
Customer Care Team: 1-866-925-2247 • Fax: 1-800-784-3458
Email: info@purolatorair.com • www.purolatorair.com

© 2010 CLARCOR Air Filtration Products.
CLARCOR Air Filtration Products has a policy of continuous product research and development and reserves the right to change design and specifications without notice. Terms and Conditions of Sale can be accessed in the "LOGIN" section at www.purolatorair.com