



PROFESSIONAL AIR MOVER OWNER'S MANUAL

X-600 / X-600A / X-630 / X-630H
P-600 / P-600A / P-630 / P-630H
P-630HC

XPOWER MANUFACTURE, INC.
240 Clary Avenue
San Gabriel CA 91776 USA
Tel: 1-855-855-8868
www.xpower.com



PLEASE READ AND SAVE THESE INSTRUCTIONS

Index

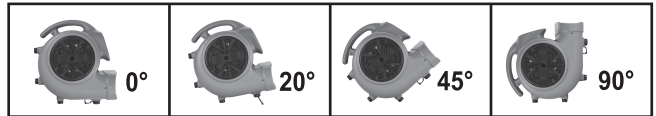
Introduction	2
Operation / Instructions.....	3
Safety Instructions.....	4
Maintenance Instructions / Troubleshooting.....	5
Specifications.....	6
Warranty / Service	7
Parts List	8
Daisy Chain Specifications	9
Accessories	10
Warranty Registration Form	11

Introduction

XPOWER Air Movers are ETL/CETL certified and multifunctional Air Mover with the most efficient engineering design.

Features:

- Low amp draw with a rated volumn of 2400 to 2800 on High.
- Super quiet motor and super lightweight.
- Easy carrying handle
- Easy and quick to disassemble for thorough cleaning and service.
- Power cord lengths are 20' for P models and 25' for X models.
- Easy cord wrap on handle.
- Safety screens on open vents.
- 3 speed switch.
- Luggage handle and wheels for "H" series models.
- Carpet clamp for "C" series models.
- Timer and filter for "TF" series models.
- 3 air-flow positions for "H" series models (0°, 20° Kickstand, 90°).
- 4 air-flow positions for other models (0°, 20° Kickstand, 45°, 90°).



- Durable and rugged housing with 5 Years Warranty.

Operation / Instructions

XPOWER Air Movers are intended to move air and to dry floors, walls, furniture, etc. Durable and easy to operate with an effective balance of static pressure and airflow, the units are suitable for a variety of applications.

1. XPOWER Air Movers are shipped ready-to-use. Prior to plugging the unit into the power source, inspect completely for any shipping damage.
2. Plug the electrical cord into a standard grounded outlet.
3. Carefully place the Air Mover unit on a stable, flat dry surface.
4. The unit is capable to be used at 4 different angles to direct air flow, except that the unit with handle is at 3 different angles.
5. Turn the switch to desired speed, while making sure unit operates normally.
6. To reduce the risk of injury, close supervision is necessary when the unit is used near children. Do not allow children to play with the unit.



AIR MOVER STORAGE:

Units without “H” can be stacked (up to 4) on their sides. Units with “H” can be stacked (up to 3) on their sides.

NOTICE:

1. Stacking feature is not secure for transportation.
2. Remove the filters before stacking.

Safety Instructions

1. To prevent electric shock, do not operate the unit in standing water. Never plug in or unplug the unit with wet hands or while standing in water.
2. To avoid risk of injury, do not direct air flow at face or any part of body.
3. **WARNING:** To reduce the risk of fire or electric shock, do not use the Air Mover with any solid-state speed control device.
4. Use only with GFCI protected receptacles. Please contact a qualified electrician for verification and / or installation of a GFCI receptacle if necessary.
5. Do not operate any Air Mover with a damaged cord or plug. Discard the unit or return it to an authorized service facility for examination and/or repair.
6. It's automatically operated device. To reduce the risk of injury disconnect from power supply before servicing.
7. Do not run the power cord under carpeting. Do not cover the power cord with throw rugs, runners, or similar coverings. Do not route the power cord under furniture or appliances. Arrange the power cord away from traffic area and where it will not be tripped over.
8. Do not allow children to play with an Air Mover at any time.
9. Do not move or carry an Air Mover while unit is operating.
10. An electronic instruction manual can be obtained through manufacturer's website www.xpower.com.

Maintenance Instructions

1. To keep the Air Mover clean, use a damp cloth to wipe the surface of the housing.
2. Never clean the Air Mover with water.
3. When not in use, unplug and store the Air Mover in a dry indoor place out of reach of children.
4. Always disconnect the Air Mover from its power source before performing any maintenance or cleaning.
5. Clean the optional filters as often as necessary to avoid loss of airflow.

Troubleshooting

For any problems not listed below, call your local distributor or contact our Service Department.

PROBLEM	POSSIBLE CAUSE	SOLUTION
Air Mover not running	No power input	Plug in the Air Mover; check circuit breaker
	Switch not turned on	Turn on switch
	Air Mover fan wheel jammed	Remove material jamming fan wheel
	Intake or exhaust blocked	Turn unit off and allow to cool, then remove blockage
Air Mover vibrates	Accumulation of dirt on fan blades	Clean Air Mover fan blades

Specifications

Model	X-600/P-600	X-600A/P-600A	X-630/P-630	X-630H/P-630H	P-630HC
Volt/Frequency	115V, 60Hz	115V, 60Hz	115V, 60Hz	115V, 60Hz	115V, 60Hz
Power	1/3 hp	1/3 hp	1/2 hp	1/2 hp	1/2 hp
Amp	3.8 A	3.8 A	5 A	5 A	5A
Weight	19.8 lbs/ 18.2 lbs	21.5 lbs/19.0 lbs	20.4 lbs/ 18.7 lbs	23.6 lbs/ 21.6 lbs	23.9 lbs
Speeds	Three	Three	Three	Three	Three
Size(H x W x D)	15.9 x 15.7 x 16.3 in.	15.9 x 15.7 x 16.3 in.	15.9 x 15.7 x 16.3 in.	16.9 x 15.7 x 16.5 in.	16.9 x 15.7 x 16.5 in.
Daisy Chain	N.A.	Inlc.	N.A.	N.A.	N.A.
Cord Length	25 ft./ 20ft.	25 ft.	25 ft./ 20ft.	25 ft./ 20ft.	20ft.
Overheating Protecting	Thermally Protected	Thermally Protected	Thermally Protected	Thermally Protected	Thermally Protected
Rated Airflow (on high)	2400 CFM	2400 CFM	2800 CFM	2800 CFM	2800 CFM
Positions	4(0°, 20°, 45°, 90°)	4(0°, 20°, 45°, 90°)	4(0°, 20°, 45°, 90°)	3(0°, 20°, 90°)	3(0°, 20°, 90°)
Housing	ABS/PP	ABS/PP	ABS/PP	ABS/PP	PP
Filter System	Optional	Optional	Optional	Optional	Optional
Handle/Wheel	Optional	Optional	Optional	Inlc.	Inlc.
Carpet Clamp	Optional	Optional	Optional	Optional	Inlc.
Timer	Optional	Optional	Optional	Optional	Optional

* All models are ETL/CETL certified

XPOWER LIMITED WARRANTY (USA)

XPOWER's Limited Warranty covers the unit (excludes POWER CORD AND FILTER) from defects in material and craftsmanship. The Warranty covers normal use for a term of one year from the original date of purchase including parts, labor and one way shipping. Non-contiguous states must pay for roundtrip freight. A purchase receipt must be provided.

Important!

This warranty does not cover or apply to defects due directly or indirectly to misuse, abuse, disassembly, alteration, corrosive chemicals, improper voltage, fire, flood, negligence, accident, improperly or incorrectly performed maintenance or repair, or failure to perform necessary maintenance or repair, or if the use of this product is not in compliance with the instructions and specifications for its use.

Service

For Warranty service and parts replacement (US users only), you must:

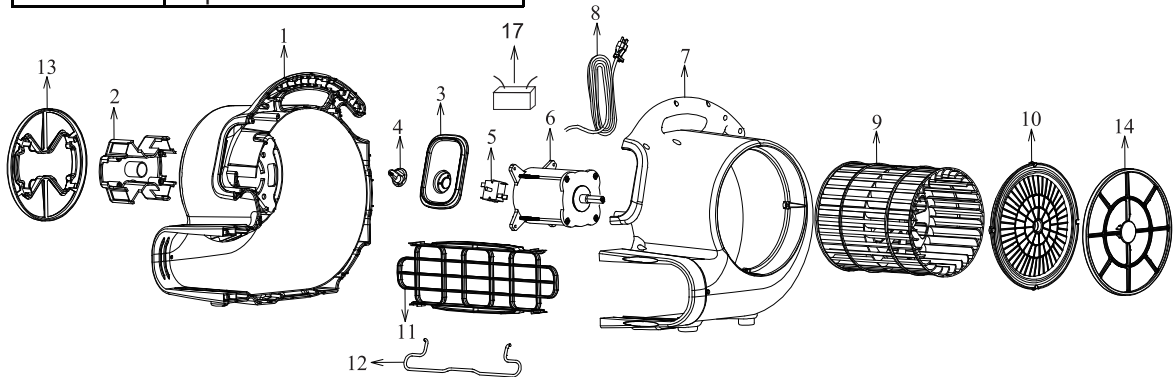
- A. Call 1-855-855-8868 for a RMA (Return-Merchandise-Authorization) number.
- B. Have original proof of purchase.
- C. Use the original undamaged packaging or an industrial certified packaging method.

End user will be responsible to ship the unit (with RMA Number showing on the shipping label) to the XPOWER Service Department. XPOWER to inspect, assess and advise the repairs needed and the applicable cost, if any.

For users outside the US, please contact XPOWER Distributor in your country or region for Warranty service and parts replacement.

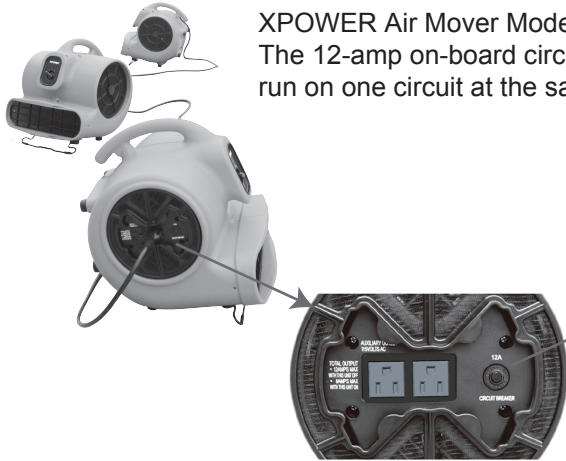
600 Series Parts List

Item No.	Parts Name	Item No.	Parts Name
600-1	Left Housing	600-2	Grid Cover (Motor Side)
600-3	Switch Plate	600-4	Switch Knob
600-5	Switch	600-6	Motor
600-7	Right Housing	600-8	Power Cord
600-9	Fan	600-10	Grid Cover (Fan Side)
600-11	Air Outlet Grid Cover	600-12	Kick Stand
600-13	Filter I (Motor Side)	600-14	Filter II (Fan Side)
600-15	Rubber Feet (Not Shown)	600-16	Screws and Nuts (Not Shown)
600-17	Capacitor		



Daisy Chain Specifications (For model X-600A/P-600A)

XPOWER Air Mover Model X-600A/P-600A are daisy chainable with a low 3.8 amp draw. The 12-amp on-board circuit breaker will allow two (2) additional same units to run on one circuit at the same time.



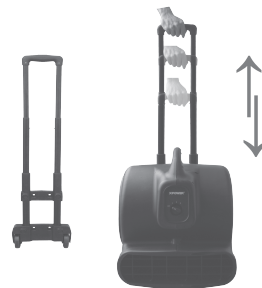
Note:

Air Mover has an on-board circuit breaker. If the auxiliary outlet overloads, the circuit breaker will trip. If the breaker trips, unplug the units and press the circuit breaker reset button. Plug the units back into the power source and turn on the switch.

Accessories

Luggage Handle & Wheels (for “H” models)

XPOWER Air Mover “H” Model comes with built-in extendable luggage handle and wheels for easy transportation and mobility.



Carpet clamp (for “C” models)

XPOWER Air Mover “C” Model comes with a carpet clamp specifically for drying under the carpets.



Filters (for “F” models)

A set of filters is available for the XPOWER Air Mover which will help prevent small debris and dust from entering the Air Mover. To clean the filters: remove filters from the unit and wash with warm soapy water, rinse with clean water and let dry thoroughly before reinstalling.

Installation:

Filters snap into the air inlets.

Note:

Filter I is for the Motor side,
Filter II is for the Fan side.



Filter Removal:

Pull the filters out of the blower.

Note:

After cleaning make sure
the filters are dry before
installing.



Warranty Registration (for US user only)

For your product warranty, please complete and mail / fax this form to XPOWER MANUFACTURE, INC.

Address: 240 Clary Ave., San Gabriel, CA 91776. Tel: 1-855-855-8868

(For your convenience, register your product online at xpower.com)

Company Name / Contact Person / Title _____

Address _____ City _____

State / Province _____ Zip _____ Country _____

Phone _____ Fax _____ E-mail _____

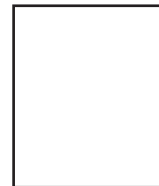
Model # _____ **Serial #:** _____

Date of Purchase ____/____/____ **Purchased From** _____

Additional Comments / Suggestions _____



From: _____



TO:
XPOWER MANUFACTURE, INC.
240 Clary Avenue
San Gabriel, CA 91776, USA
Tel: 1-855-855-8868

